

PRODUCTION COST FEEDLOT BEEF CATTLE IN THE SOUTHEAST AND CENTRAL-WESTERN REGIONS OF BRAZIL: ANALYZES FROM 2017 TO 2019

Danny Alexander Rojas Moreno¹, Gustavo Lineu Sartorello², Guilherme Fonseca Boldrin Jonas¹, Beatriz Queiróz dos Reis², Vanessa Theodoro Rezende², Laya Kannan Silva Alves², Miguel Rodrigues de Souza¹ e Augusto Hauber Gameiro².

¹School of Animal Science and Food Engineering, University of São Paulo, Pirassununga, SP, Brazil; ²School of Veterinary Medicine and Animal Science, University of São Paulo, Pirassununga, SP, Brazil. *e-mail: dannymoreno.zoot@gmail.com.

Objective

The aims were to evaluate and compare the total cost (TC) and feedlot cattle production cost index (ICBC) in the states of São Paulo (SP) and Goiás (GO) from April of 2017 until December of 2019. In addition, the progress of ICBC was compared with the General Price Index - Internal Availability (IGP-DI) in that same period.

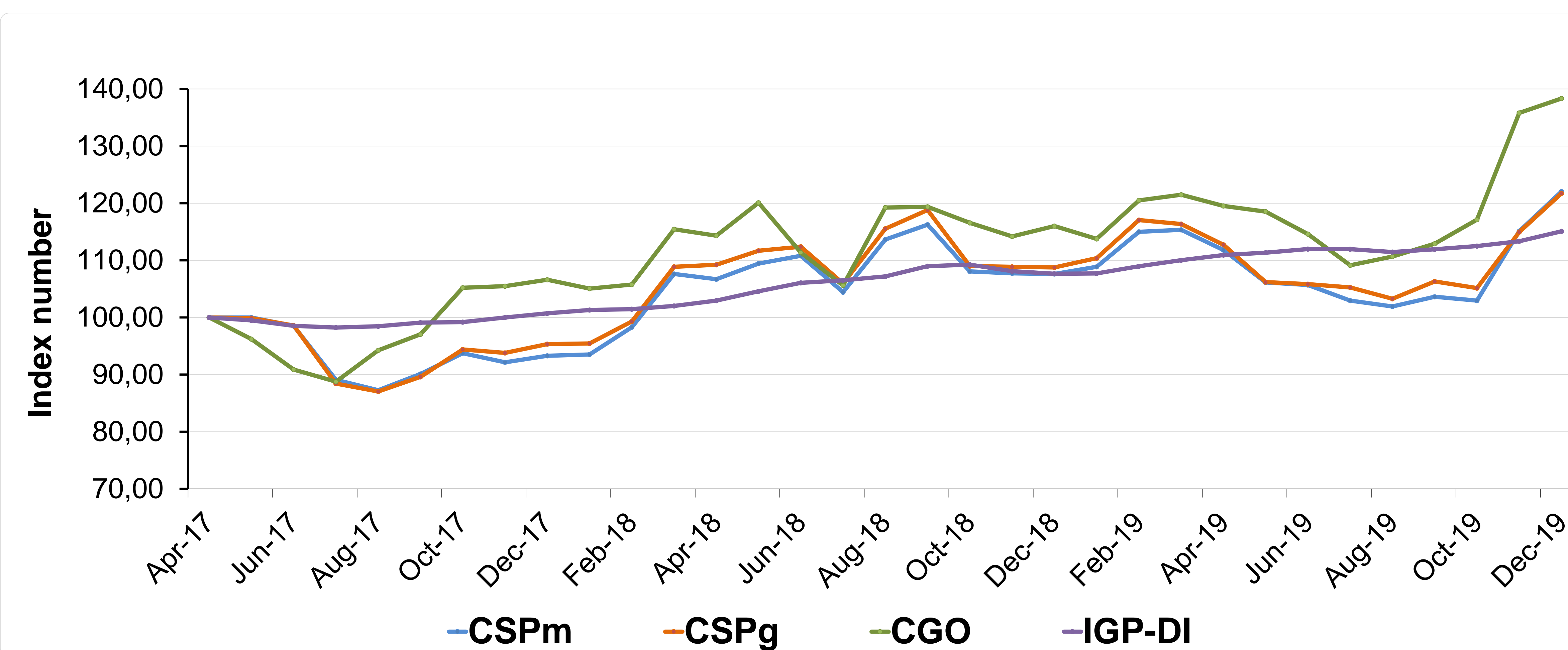
Material and Methods

- This research has been developed at the Laboratory of Socioeconomic Analyses and Animal Science (LAE) of the University of São Paulo (USP).
- The LAE carried out the monthly monitoring of all the prices of the basic inputs used in the feedlot system in the states of São Paulo and Goiás between 2017 and 2019.
- The feedlot of the states of SP and GO were delimited in three representative properties, two for SP (CSPm and CSPg) and one for GO (CGO).

Results and Discussion

- The accumulated inflation by the IGP-DI was 15.1%, while in the ICBC it was 22%, 21.7% and 38.3% for CSPm, CSPg and CGO, respectively. There was a real increase of 6.9%, 6.6% and 23.2%, in that same order, for farmers.
- In October 2019 the TC per kg of live weight (LW) increased until the end of the evaluation period, this being \$ 3.52, \$ 3.46 and \$ 3.62 per kg of LW, respectively.
- The cost items increased more in GO status than in SP. however, the purchase of animals and the inputs of the diet were the main cost items that influence CT.

Figure 1. Feedlot Cattle Production Cost Index of the representative feedlots analyzed and General Internal Distribution Price Index - Internal Availability from April 2017 to December 2019



Conclusion

We conclude that in the southeast and central-western regions of Brazil, farmers had real increases in their production costs in the feedlot. Furthermore, there was greater variability in ICBC compared to IGP-DI.